

# U-COO

## Remote Temperature Monitoring Device



4G

### Remote Temperature Recording:

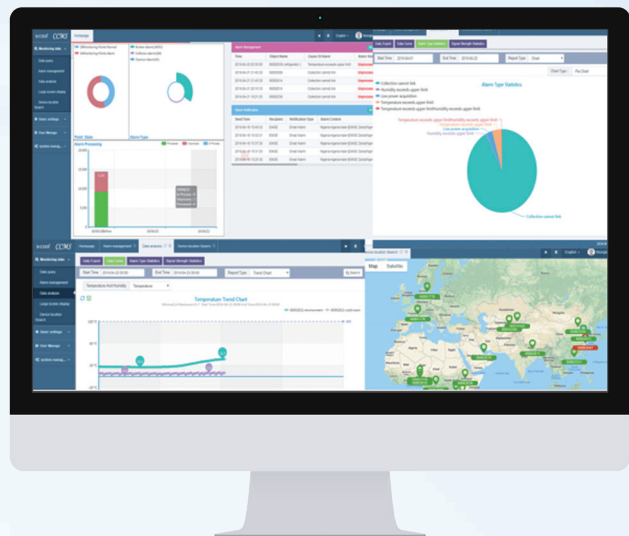
The external temperature sensor measures the temperature, records and stores the measured temperature values automatically, and transmits them to the platform through GPRS, secure remote platform monitoring.

### Application Scenarios

It can be used for real-time monitoring of warehousing and distribution of food, medicine, vaccine, blood, reagents, biological products, biological sample tissue and other items. The application scenarios include refrigerated trucks, incubators, cold rooms, cold packs, refrigerated cabinets, refrigerators and freezers as key examples.

### Cloud Platform Website

<http://ucoole.haierbiomedical.com>



**Haier Biomedical**

Qingdao Haier Biomedical Co.,Ltd. [www.haiermedical.com](http://www.haiermedical.com)

Brand Building, Haier Industrial Park, No.1Haier Road, Qingdao,  
266101, P.R.China

**Haier Biomedical**  
Intelligent Protection of Life Science

## Product Features



**2G**

- Once powered on, the device immediately uploads the data automatically to the portal. Superior device, one simple activation - no technical skills needed, easy and user friendly.
- Remote portal management platform, which can track temperature, location, signal strength information and has multiple data analysis reports.
- One full charge, more than 10 days of battery life.
- The device supports sound and light alarms.
- USB data export (30 days temperature records).
- High precision, wide range of temperature measurements.
- IP65 protection, waterproof, shockproof and dustproof to fit a variety of complex environments.
- Complies with WHO Standards, WHO prequalified code: E006/060 (2G)

Item	Specifications
Temperature sensor	NTC sensor: -40℃~+120℃ (±0.5℃ within -30℃ to +20℃, ±1℃ for other) PT100 sensor (optional): -200℃~+150℃ (±0.3℃)
Environment Sensor	Temperature: -10℃~+55℃ Humidity: 0%RH-99%RH
2G	850M/900M/1800M/1900M
4G	LTE FDD: B1/B3/B5/B8    LTE TDD: B38/B39/B40/B41 WCDMA: B1/B8            TD-SCDMA: B34/B39CDMA: B0 GSM: 900/1800MHz
Storage capacity:	260,000 sets of data,
Battery	4G: Capacity: 5000mAh 2G: 6000mAh Charging voltage: 5V-12V Charging current ≤1.5A
Alarm	Audio-visual: Buzzer + LED light
SIM card	Built-in Nano SIM
Map location	Google map and LBS(Location Based Service)
USB	Micro USB: download data /Charging
Material	Shell: PC / Shell jacket: ABS
IP	IP65
Dimensions	4G: 110mm*70mm*18mm 2G: 114.5 mm *71.5 mm *22mm